



West Coast Little Luxuries Famil

1-6 Jul 2024



Development West Coast

Development West Coast

Email address tourism@dwc.org.nz

Welcome to Untamed Natural Wilderness, welcome to the West Coast!

You can expect things to be different on the West Coast – more real, bigger than anticipated, greater than you thought.

Wedge between towering mountains and the crashing sea, the West Coast is the region forgotten by the rest of its country. Our trees are skyscrapers that touch the sky, our rivers and lakes are the best New Zealand has to offer and our attractions are authentic.

Get your wanderlust on by searching #westcoastnz and soon you'll be sharing your own snaps. Famed for its record rainfall, but with sunny days so crisp and clear you will be pinching yourself, there are attractions here for every type of visitor, even the discerning ones.

Be prepared to be astounded, have your breath taken away, be at a loss for words, as this is the West Coast. This is – Untamed Natural Wilderness.

Visual Library and Further Information

If you require any images of the West Coast, check out our [Visual Library](#).

For any further information about our extraordinary region please do not hesitate to visit our [website](#).

Inclusions

Hosted domestic air travel, accommodation, transport, meals and sightseeing as detailed on the itinerary only. All other costs including items of a personal nature, such as phone calls, mini bar, internet and laundry from accommodation will be at your own expense and some meals may also be at your own expense.

The arrangements in this itinerary have been made especially for you with the generous support and cooperation of our operators as detailed.

Dress Code

Famil dress code is casual and appropriate to your activities. To ensure you are prepared for our New Zealand weather, please bring with you the below items;

- Gloves, hat and scarf
- Sunglasses are handy
- Raincoat (this is a rainforest after all)
- Comfortable walking shoes
- Small day/backpack
- Swimsuit
- A smile and a sense of adventure!

Health and Safety

New Zealand is generally a very safe place in which to travel. However, you should take the same precautions here as you would at home to protect your valuables and keep yourself safe.

Ensure that you have informed your hosts of any allergies, fears, phobias or health issues or other concerns which may impact on your experience of this famil.

Emergency Information

In the unlikely event of an emergency, your West Coast host will be able to advise you. If you are unable to contact your host or if your famil is un-hosted, please contact emergency services.

The emergency telephone number in New Zealand is 111. It is a free phone call. If you have an emergency and need a quick response from the Police, the Fire Service, Ambulance or Search and Rescue, dial 111.

Day 1 Monday, 1 Jul 2024

Welcome to the West Coast

Palm-fringed beaches, icy glaciers, historic places and everything in between ... the West Coast stretches 600 km from Kahurangi Point in the north to Awarua Point in the south, but never more than about 50 km across between the Tasman Sea and the Southern Alps.

We're New Zealand's third largest region but more like a series of regions and districts, each with their own unique landscape, distinct climate, attractions and stories.

Discovering our treasures will take a while. Millions of years went into forming this land — good things take time so be prepared to stay longer!

Pick up from your Christchurch Accommodation

Please ensure you are ready and waiting in the lobby of your hotel at your confirmed pick up time below:

6:30am -
6:35am -
6:40am -
6:45am -
6:50am -
7:00am -
7:05am -
7:15am -

Your host will let you know if they are running late.

Transfer with Hokitika Scenic Tours Transfer



At Hokitika Scenic Tours we specialise in guided tours of this magnificent part of Aotearoa. From accommodation bookings and transfers for private groups, through to half and full-day tours or multi-day tour packages. Our goal is to create the best, custom experience for you and your family and friends.

Transfer from Christchurch Accommodation to Maruia Hot Springs



Site Inspection

Activity



Maruia Hot Springs is an award-winning natural hot springs, day spa and wellness destination tucked among the snow-capped Southern Alps on the picturesque Lewis Pass national reserve. Instantly feel connected to the mountainous landscape and nature surrounding you whilst you relax in natural geothermal mineral pools, nourish your soul with organic food and relax your body & mind in our daily wellness classes.



Bathe & Sauna

Activity

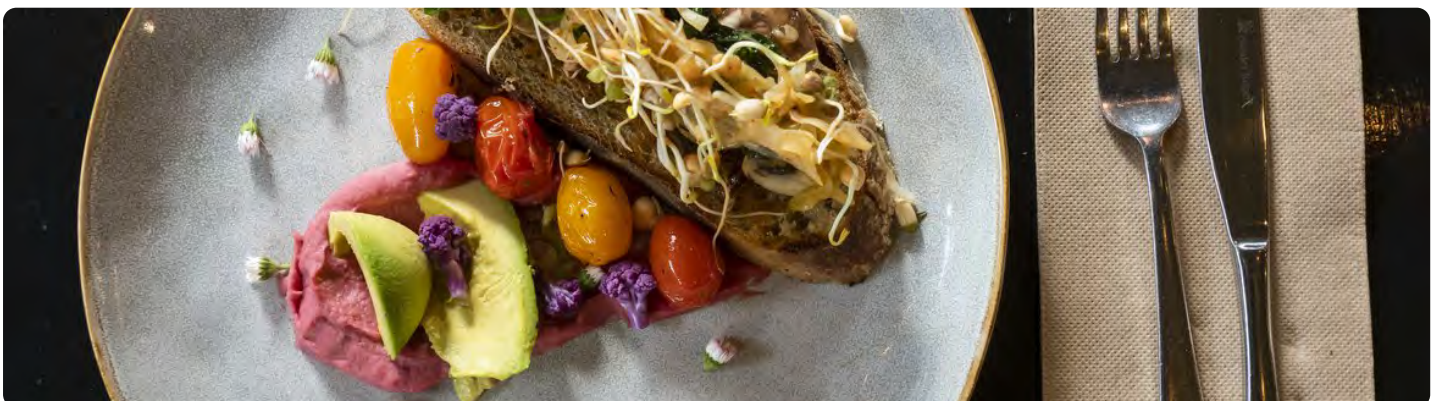


Maruia Hot Springs is an award-winning natural hot springs, day spa and wellness destination tucked among the snow-capped Southern Alps on the picturesque Lewis Pass national reserve. Instantly feel connected to the mountainous landscape and nature surrounding you whilst you relax in natural geothermal mineral pools, nourish your soul with organic food and relax your body & mind in our daily wellness classes.



Gourmet Dining Experience

Meal



Maruia Hot Springs is an award-winning natural hot springs, day spa and wellness destination tucked among the snow-capped Southern Alps on the picturesque Lewis Pass national reserve. Instantly feel connected to the mountainous landscape and nature surrounding you whilst you relax in natural geothermal mineral pools, nourish your soul with organic food and relax your body & mind in our daily wellness classes.



Transfer from Maruia Hot Springs to Reefton Distillery



Our Story and Tasting Tour Activity



There is something about the spirit of the West Coast and its people. They have always had belief in themselves, a can-do attitude and they are not afraid to get behind a new idea. Reefton was an entrepreneurial and prosperous place in its early days, and we in turn plan to add the success story of Reefton Distilling Co. to the history books.

The hills surrounding our distillery are rich in botanicals, if you know where to look. Our search takes us deep into the densely forested West Coast region and to local gardens where we forage for native leaves, flowers and berries.

Reefton Distilling Co. is a modern ... Our distillery expanded in 2022, relocating to our new 1.6ha rural site on the edge of town. We repurposed existing buildings to house our stillroom, warehouse, bottling hall and our office building, which is an important part of our commitment to sustainability. Our original site is still the home of our Cellar Door and retail store, and is open 7 days to welcome visitors.

The Reefton Distilling Co. team are inspired to provide you with a truly unique West Coast experience as they share the story behind the crafting of their local botanical gins, liqueurs, vodka and whisky.

Join us at our Cellar Door lounge for a relaxed session, where your Host will share the story and the motivation of our Founder, to create a distillery in this part of Aotearoa New Zealand. You will be given an insight into the distilling process for our Moonlight Creek Whisky and Little Biddy Gin before getting to experience a selection of our products with a complimentary tasting.

Our first still Little Biddy remains in her original spot and has been turned into a time capsule, which will be opened at our 100 year anniversary in 2117.

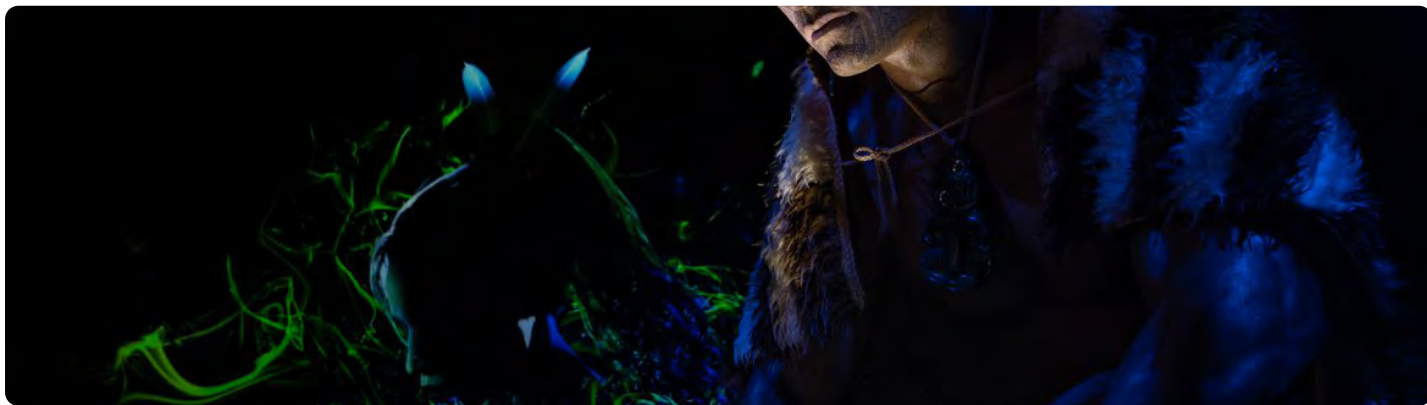
Note: This tour does NOT include a visit to the working distillery and production area.



Transfer from Reefton Distilling Co to Pounamu Pathway



Mawhera Greymouth Activity



The Pounamu Pathway is an immersive storytelling experience delivered in four unique and linked hubs across the West Coast/Te Tai o Poutini, from Haast/Awarua to Westport/Kawatiri.

Life at the Māwhera Pā

Step into a one-of-a-kind self-guided experience that immerses you in the rich tapestry of Poutini Ngāi Tahu and the Māwhera Pā settlement. This captivating exhibition leads you through six compelling narratives, allowing you to explore at your own pace for a duration of 90 minutes or more.

As you journey through these tales, be enchanted by a striking large-scale masterpiece crafted by Wētā Workshop and a sensory feast of visuals and sound, culminating in an unforgettable and inspiring encounter.



Transfer from Pounamu Pathway to Pancake Rocks & Blowholes Track



Pancake Rocks & Blowholes Walk



Explore a limestone landscape of pancake-shaped rock formations, blowholes and surge pools on this short, paved walk that's great for families.

Distance: 1.1km

Duration: 20/30 min loop.

This is an all-weather walk around the curious limestone formations of pancake rocks and blowholes. With the exception of an optional short section with steps, the walk is suitable for wheelchairs (with assistance).

Blowholes form from a mixture of compressed water and air escaping through the caverns below and being forced upwards, creating a huge wall of spray. They are at their best around high tide when there is a south-westerly swell.

Spectacular views, geological oddities, coastal forest, rich birdlife and marine mammals are highlights along this walk.



Transfer from Pancake Rocks & Blowholes Track to Scenic Hotel Punakaiki



Site Inspection Activity



▮ A stunning ocean view retreat located right on the beach, 30 minutes north of Greymouth and 300m south of the famous Pancake Rocks and Blowholes. With stunning views of the Tasman Sea, Punakaiki Beach the resort is surrounded by the forest Paparoa National Park. The 63 premium guest rooms are designed in harmony with the local environment to maintain a sense of privacy and have either ocean or rainforest views.

- 13 x Beachview rooms
- 14 x Grand Ocean view rooms
- 24 x Rainforest rooms
- 12 x Deluxe suites



Accommodation (1 night)



A stunning ocean view retreat located right on the beach, 30 minutes north of Greymouth and 300m south of the

famous Pancake Rocks and Blowholes. With stunning views of the Tasman Sea, Punakaiki Beach the resort is surrounded by the forest Paparoa National Park. The 63 premium guest rooms are designed in harmony with the local environment to maintain a sense of privacy and have either ocean or rainforest views.



Ocean View Restaurant & Bar

Meal



Watch the sunset over the Tasman Sea while enjoying epic views of the Punakaiki Beach and Coastline from your table.

The Ocean View Restaurant and Bar is open 7 days for breakfast, lunch and dinner to hotel guests, locals, and visitors to Punakaiki. Their Executive Chef's create seasonal dishes to tantalise the tastebuds using local foods and flavours that flow through into an exceptional dining experience.

Day 2 Tuesday, 2 Jul 2024



Breakfast at your leisure at the hotel

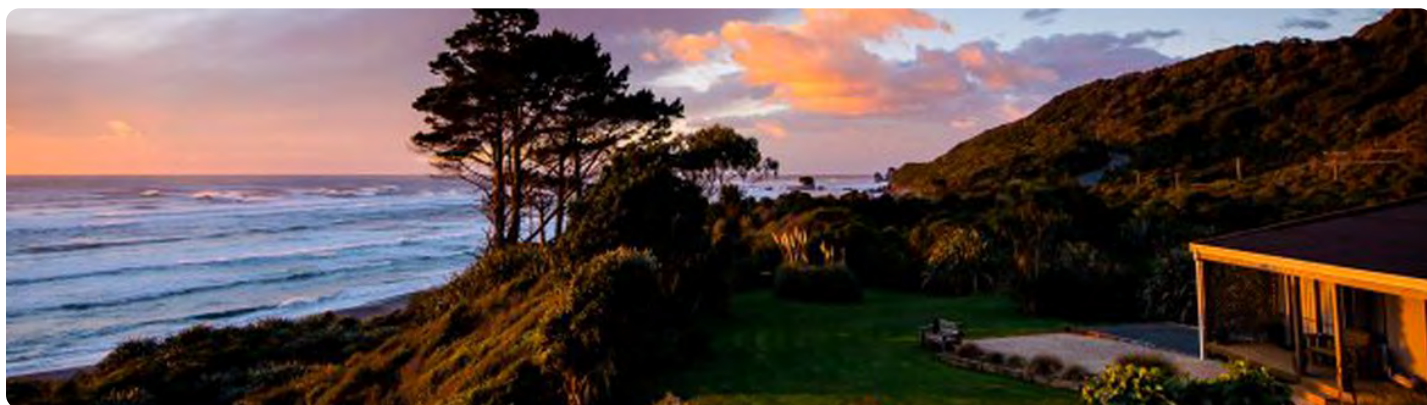


Transfer from Scenic Hotel Punakaiki to Breakers Boutique Accommodation



Site Inspection at Breakers

Activity



Breakers Boutique Accommodation is north of Greymouth on the Coast Road heading towards Punakaiki and has

four guest rooms, all with a fantastic sea view.

Breakers is set on two acres of native bush and landscaped gardens overlooking the Tasman Sea. With plenty of outdoor seating guests can sit back, relax and enjoy the sea views. We have a private track for beach access. Stunningly located on the Punakaiki Coastline, overlooking the Tasman Sea, Breakers is a boutique bed & breakfast, offering true NZ hospitality with its beachfront location and amazing panoramic sea views.

- 2 x rooms upstairs in main house (Koromiko & Kowhai)
- 2 x rooms in the annex (Koru & Nikau)



Transfer from Breakers Boutique Accommodation to Te Aka Treehouse



Site Inspection

Guide



Welcome to Te Aka Treehouse, one of New Zealand's newest off-grid retreats in a pristine native forest. Owned by Kiwis, Lisa & Dave, our place offers a unique and relaxing escape. Immerse yourself in the untouched beauty of the forest environment, with its dappled light, birdsong symphonies, and breathtaking views.



Transfer from Te Aka Treehouse to Lake Brunner Eco Lodge



Site Inspection

Guide



Hidden on the southern shore of Lake Brunner, surrounded by some of the oldest protected podocarp rainforest in the world, Lake Brunner Eco Lodge is a classic wilderness retreat with native birds and plants, glow worms, waterfalls and one of the best stargazing spots on the West Coast.



Transfer from Lake Brunner Eco Lodge to Theatre Royal Hotel



Site Inspection

Guide



The Theatre Royal Hotel is the West Coast's only fully restored gold miners' hotel, and once world-renowned theatre. The historic gold rush hotel features six themed ensuite accommodation rooms. Each room is unique, with its blend

of Victorian decor, antique furnishings, modern amenities and West Coast charm. There is a range of restored and replica cottage accommodation to suit every budget. The Restaurant and bar is open daily and we have great facilities for cyclists.



Theatre Royal Hotel

Meal



RESTAURANT & BAR

West Coast hospitality awaits in our welcoming restaurant.



Transfer from Theatre Royal Hotel to Hokitika Fire Station Apartments



Site Inspection Guide



Steeped in local history, this iconic listed former Fire Station building has been lovingly restored and converted into **5 self-contained apartments**.

Each apartment at the Hokitika Fire Station is named after a fire chief who once led the Brigade and has it's own unique feel but all 5 are equally welcoming, with thoughtful touches of luxury.

- 4 x Studios (including one accessible studio)
- 1 x Three bedroom apartment

The apartments also offer shared, fully-equipped laundry facilities, a secure storage area and a beautiful outdoor patio and fireplace for star-gazers.



Accommodation (1 night)



Steeped in local history, this iconic listed former Fire Station building has been lovingly restored and converted into **5 self-contained apartments**.

Each apartment at the Hokitika Fire Station is named after a fire chief who once led the Brigade and has its own unique feel but all 5 are equally welcoming, with thoughtful touches of luxury.

- 4 x Studios (including one accessible studio)
- 1 x Three bedroom apartment

The apartments also offer shared, fully-equipped laundry facilities, a secure storage area and a beautiful outdoor patio and fireplace for star-gazers.



Transfer from Hokitika Fire Station Apartments to Hokitika Gorge Walk



Hokitika Gorge



The Hokitika Gorge is 33kms from Hokitika. The vivid turquoise water surrounded by lush native bush is well worth a visit.

Observe from a swingbridge, the magnificent blue-green waters of the Hokitika River as it makes its way through the rock-sided Hokitika Gorge surrounded by native bush.

Distance: 2.0km

Duration: 1 hour

Low level of fitness required. Please ensure all children are accompanied and supervised by an adult. Please wear responsible footwear.



Transfer from Hokitika Gorge Walk to Rimu Lodge



Site Inspection Guide



Rimu Lodge is the only Qualmark 5 star lodge on the West Coast of the South Island. Nestled in a stunning landscape of pristine forest and majestic mountain ranges. Soak up the peace and tranquility of this architecturally designed lodge. Perfectly located to take in its breath-taking surroundings, the lodge is also just 10 minutes' drive from Hokitika's cafes and restaurants. Four individually designed suites which all enjoy views over the Hokitika river and to the Southern alps beyond farmland and majestic native bush. Rimu lodge is renowned for its laid back luxury, the perfect place for a weekend away or a stopover on your South Island adventure.



Transfer to from Rimu Lodge to Woodstock Hotel



Dine at Woodstock Hotel Meal



The Woodstock Hotel has been here from the great days of the Goldrush, when Hokitika was the busiest port in New Zealand and was in the mix to be named the capital of New Zealand. The Woodstock Hotel has played many roles in the life of Woodstock, not only as a public house but also as a meeting place, post office and even as a morgue. Al-fresco beer garden if you fancy relaxing with great views overlooking the Hokitika river.



Group to split

Group #1 - 4 agents

Names:

Overnight accommodation at Hokitika Fire Station Boutique Apartments

Group #2 - 4 agents

Names:

Overnight accommodation at Beachfront Hotel Hokitika



Transfer to Accommodations



Accommodation (1 night)



Located right on the beach, the stunning Beachfront Hotel is located in central Hokitika on New Zealand's West Coast. With its unique location on the shores of the Tasman Sea and in the centre of Hokitika, beachcombing, shopping, artisan shops, and galleries are right on the hotel's doorstep. The hotel offers five categories of rooms – from elegant street-front Driftwood Rooms to modern, luxury and spacious Ocean View Rooms with an uninterrupted view of the beach, to the magnificent Penthouse.

Day 3 Wednesday, 3 Jul 2024



Transfer from Hokitika Fire Station Apartments to Beachfront Hotel Hokitika

Pick up group #1 and transfer to Beachfront Hotel Hokitika for breakfast with group #2.

Group #1 - 4 agents

Names:



Breakfast at Beachfront Hotel Hokitika



Transfer from Beachfront Hotel Hokitika to WC Treetop Walk & Zipline



Treetop Walkway Adventure

Activity



A leisurely 45-minute to one hour stroll through the beautiful West Coast rainforest tree tops. One of the top things to do in Hokitika, only 15 minutes drive south of the town centre. An exhilarating treetop adventure among temperate rainforest giants, experience life with the birds, high in the ancient Rimu and Kamahi tree canopy. 2 options:

- **Treetop Walk:** Easy access for all to enjoy along a steel platform 20 metres high and over 450 metres long. Climb to the top of Hokitika Tower 45 metres above the forest floor.
- **The zipline challenge:** it begins from the platform 45m or 15 storeys above the ground into the sky. It's followed by a 425m long 40 seconds 60km/hr flight within the Rimu rainforest canopy before landing opposite the Cafe/Visitor Centre.

Come and enjoy a leisurely 45-minute to one hour stroll through the beautiful West Coast rainforest tree tops. One of the top things to do in Hokitika, only 15 minutes drive south of the town centre.

An exhilarating treetop adventure among temperate rainforest giants, experience life with the birds, high in the ancient Rimu and Kamahi tree canopy.

Easy access for all to enjoy along a steel platform 20 metres high and over 450 metres long.



Transfer from WC Treetop Walk & Zipline to Ross Beach Top 10 Holiday Park



Site Inspection

Guide



Kia ora, welcome to Ross Beach TOP 10 Holiday Park, we are a small boutique holiday park on the West Coast of the South Island NZ like no other TOP 10 you have ever visited before!

Here you will find 11 upcycled shipping container accommodations, 4 brand NEW Glamping Domes and 30+ site for RV, Caravan & tents.



Transfer from Ross Beach Top 10 to SnakeBite Brewery



Dine at Snakebite Meal



Mark, Billy and Adam had called Franz Josef home for nearly a decade when the opportunity to join forces and reinvigorate a very tired old restaurant on the village's main street.

Their Franz Josef food and beer experience began in 2013 with the opening of 88 Asian Fusion Restaurant and Lounge Bar. In the early hours of May 1st 2015 things got a bit hot in the laundry and the building caught fire. They took the very best from 88 Asian Fusion and re-invented their Franz Josef Glacier experience.



Transfer from SnakeBite Brewery to Lake Mapourika



Scenic Cruise and Nature Walk Activity



Journey across Lake Mapourika, where you'll enjoy exclusive access to our private rainforest trail through the captivating Okarito Kiwi Sanctuary. Stepping off the boat, you'll find yourself transported into a Jurassic rainforest, like entering another world!

The nature walk follows a track thoughtfully carved by your skipper Dale and his team, ensuring minimal impact on the area. Experience the pristine beauty of old-growth rainforest, untouched and preserved in its natural state. This haven is home to abundant birdlife, including the graceful white herons and New Zealand's native bush birds.

Indulge in the premium West Coast experience of our Scenic Cruise & Nature Walk, suitable for all ages.



Transfer from Lake Mapourika to Waiho Hot Tubs



Waiho Hot Tubs Soaking

Activity



Relax and unwind in the soothing comfort of fresh, warm water and aromatic wood smoke. Enjoy your own private tubs, nestled in a lush rainforest setting on New Zealand's West Coast. Our wood-fired hot tubs combine the soothing comfort of warm water with the unique atmosphere of wood smoke to give you an unforgettable experience.



Transfer from Waiho Hot Tubs to Distinction Te Weheka Fox Glacier Hotel



Accommodation (1 night)



Distinction Hotel Fox Glacier is located in the township of Fox Glacier, a lovely and quaint settlement nestled at the foot of the magnificent Southern Alps. All the Distinction Fox Glacier Hotel rooms feature their own balcony, lounge area, spacious bedroom, TVs with Freeview channels and ensuite with a separate shower and bath.

The hotel is located in one of the world's most ruggedly beautiful environments - nestled beneath the towering Southern Alps. All 20 rooms are beautifully appointed and feature their own balcony, lounge area and spacious bedroom.

Hotel restaurant available for breakfast and dinner (summer only).

- 20 x Fox Glacier Hotel rooms



Check in at hotel and time to fresh up / free time before dinner

Check in and freshen up at Distinction Fox Glacier before dinner.

From 17:30 to 18:30 (1 hour)



Walk from Distinction Fox Glacier to Betsey Jane Restaurant

Walk to Betsey Jane Eatery & Bar - about 5 mins



Dine at Betsey Jane Eatery & Bar

Meal



Betsey Jane is a new bar/eatery in Fox Glacier that was converted from a old two bedroom cottage to a beautiful big restaurant.

Day 4 Thursday, 4 Jul 2024



Breakfast at your leisure at the hotel



Transfer from Distinction Fox Glacier to Waiatoto River Safari

Via Ships Creek & Knights Point Lookout



Waiatoto River Safari

Activity



You'll find New Zealand's only ocean to alps river safari near Haast on the West Coast of the South Island. Discover some of the best examples of New Zealand's dramatically changing landscapes. Learn about the local flora and fauna to be found in this wilderness area. Hear tales of the pioneering spirit of the early settlers and what it's like to live and farm in this remote region today.

Travel to the top of the river and listen as we impart our in-depth knowledge of the area. Pass over the Alpine Fault line and watch the truly dramatic scenery unfold. Learn about the introduced animals, visit the Kiwi sanctuary and learn about the Kiwi breeding program. The laid-back, relaxed pace of this river safari allows plenty of time for photo stops and an optional stroll followed by a scrumptious morning tea before a speedy trip back downriver to the Tasman Sea to spot some native birds before finishing off with a visit to the breeding grounds of the famous West Coast New Zealand Whitebait fishery.

Tour duration: 2.25 hours (Allow 3 hours).



Transfer from Waiatoto River Safari to Lake Moeraki Wilderness Lodge



Site Inspection

Activity



This lodge is located on the lakeshore in untouched rainforest near the Tasman Sea coast's seals and penguins. The Wilderness Lodge experience combines quality scenic accommodation, superb food, gracious hospitality and exciting nature adventures.

This lodge is located on the lakeshore in untouched rainforest near the Tasman Sea coast's seals and penguins. The

Wilderness Lodge experience combines quality scenic accommodation, superb food, gracious hospitality and exciting nature adventures.

- 4 x Riverview room
- 20 x Rainforest room



Transfer from Lake Moeraki Wilderness Lodge to INFLITE Franz & Fox Helicopters



Tasman Glacier - Picnic Amongst the Peaks Activity



The only operator on the West Coast offering Helicopter flights with landings on the Tasman Glacier.

Featuring famous natural landmarks including New Zealand's top national parks, highest mountain peak – Aoraki/Mount Cook, and longest glacier – the Tasman Glacier.

Flying across both Te Poutini and Aoraki/Mount Cook National Parks, above Franz Josef & Fox Glacier and more – you can expect a feeling of awe, marvel, and total ease under the guidance of an experienced pilot, rich with local knowledge of the area. Soaring over picture-perfect landscapes and touching down on a tranquil glacier as old as time. Boasting spectacular views, rare and beautiful photo opportunities, and deliciously clear alpine air. Indulge in the silent serenity of the Southern Alps with a Helicopter flight and glacier landing with private picnic amongst New Zealand's tallest mountain peaks. Including Franz Josef & Fox Glacier, Aoraki Mount Cook and Mount Tasman, and West Coasts only private landing on NZ's longest glacier, the Tasman Glacier.



Walk from INFLITE Franz & Fox Helicopters to Rainforest Retreat

Walk to Rainforest Retreat - about 5 minutes



Rainforest Retreat - Site Inspection Guide



Rainforest is nestled amongst the rainforest Franz Josef Village the retreat offers three accommodation options for all travellers.

- * Retreat Deluxe - Modern and luxurious accommodations
- * Retreat - Family tree houses and lodge cabins individually sited
- * Holiday Park & Flashpackers - Powered Campervan sites, motel room and dorm rooms available

Walk from Rainforest Retreat to Te Waonui Forest Retreat

Check in at hotel and time to fresh up / free time

Check in and freshen up at Te Waonui Forest Retreat

From 16:35 to 17:30 (1 hour)

Accommodation (1 night)



Located in Franz Josef, our luxurious eco-designed Te Waonui Forest Retreat provides outstanding experience that is close to nature but far from ordinary.

Te Waonui Forest Retreat offers an exclusive luxury hotel experience on New Zealand's beautiful West Coast. A 5 star retreat, we have designed Te Waonui to offer an unparalleled example of sustainable accommodation. Our four wings join together to enclose an area of native rainforest that was carefully preserved during construction, and is so dense that guests can't see the opposite

Gin Class Activity



The class will be held by Girish, Te Waonui's Food and Beverage Manager who has extensive knowledge about gin cocktails.

Girish has designed some signature cocktails for a few newly launched gins around New Zealand.



Dinner at The Canopy Restaurant - 4 course menu

Meal



Dinner at the Canopy Restaurant - 4 course degustation menu.

Day 5 Friday, 5 Jul 2024



Breakfast at your leisure at the hotel



Walk from Te Waonui Forest Retreat to Franz Josef Glacier Guides

Walk to Franz Josef Glacier Guides - about 5 minutes



Glacier Heli Hike

Activity



Franz Josef Glacier Guides is an internationally recognized guiding operation, established in 1990. We pride ourselves on providing the most incredible experience of the glacier and surrounding areas. We have exclusive guiding access on the world renowned Franz Josef Glacier. Combining traditional guiding techniques unique to Aotearoa (New Zealand) with modern innovations, we are able to access remote glacier terrain that would normally only be accessible to experienced mountaineers.



Transfer from Franz Josef Glacier Guides to Westwood Lodge



Site Inspection Guide



Westwood Lodge Bed and Breakfast is located in Franz Josef on the West Coast of New Zealand. We are situated right in the forest, with stunning views of the World Heritage Westland National Park, the Southern Alps and Franz Josef Glacier.

Qualmark 4 Star Boutique & Lodge



Transfer from Westwood Lodge to Greymouth Railway Station



TranzAlpine Train



Weaving coast-to-coast through the stunning Southern Alps, the TranzAlpine journey is one of a kind. Ranked amongst the best train journeys in the world, the TranzAlpine route is truly stunning. Cutting through the mountainous spine of New Zealand's South Island, the railway weaves through cliff-lined river gorges, over high mountain plains, over braided rivers and around pristine mountain lakes.

Experience the South Island's striking natural landscape by taking a train between Christchurch and Greymouth. Along this journey you'll see epic vistas, travel the edges of the ice-fed Waimakariri River, traverse the Southern Alps, and see miles of native beech forest. The TranzAlpine is one of the world's great train journeys covering 223 kilometres (139 miles) one-way, taking just under 5 hours. You'll traverse the majestic Canterbury Plains, to the backdrop of the mighty Southern Alps - the journey of a lifetime.



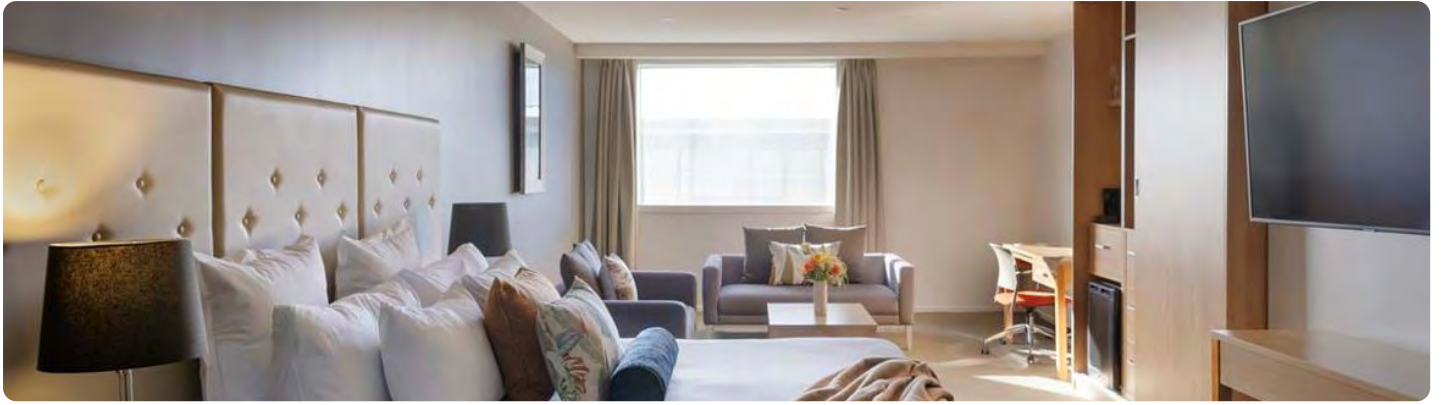
Transfer from Christchurch Railway Station to Fable Christchurch



Shuttle Transfer Transfer



Accommodation (1 night)



The ultimate in private relaxation awaits in our exclusive Junior Suite with King sized bed.

Beyond our extensive range of in-room features and amenities, this Suite boasts a jacuzzi bath for a long, luxurious soak. Why not order a delicious meal from our in-room dining menu, make yourself an espresso and relax in front of one of hundreds of streaming shows?

Day 6 Saturday, 6 Jul 2024



END OF FAMIL

OUTLINE

DAY 1

Mon, 1 Jul 2024



Welcome to the West Coast



6:30am | Pick up from your Christchurch Accommodation



6:30am | Transfer with Hokitika Scenic Tours
Transfer



7:30am | Transfer from Christchurch Accommodation to Maruia Hot Springs



10:00am | Site Inspection
Activity



10:00am | Bathe & Sauna
Activity



11:00am | Gourmet Dining Experience
Meal



12:00pm | Transfer from Maruia Hot Springs to Reefton Distillery



1:00pm | Our Story and Tasting Tour
Activity



2:00pm | Transfer from Reefton Distilling Co to Pounamu Pathway



3:00pm | Mawhera Greymouth
Activity



4:00pm | Transfer from Pounamu Pathway to Pancake Rocks & Blowholes Track



4:40pm | Pancake Rocks & Blowholes Walk



5:15pm | Transfer from Pancake Rocks & Blowholes Track to Scenic Hotel
Punakaiki



5:20pm | Site Inspection
Activity



5:20pm | Accommodation (1 night)



6:00pm | Ocean View Restaurant & Bar
Meal

DAY 2

Tue, 2 Jul 2024



Breakfast at your leisure at the hotel



8:00am | Transfer from Scenic Hotel Punakaiki to Breakers Boutique
Accommodation



8:20am | Site Inspection at Breakers
Activity



8:50am | Transfer from Breakers Boutique Accommodation to Te Aka Treehouse



9:30am | Site Inspection
Guide



10:00am | Transfer from Te Aka Treehouse to Lake Brunner Eco Lodge



11:00am | Site Inspection
Guide



11:30am | Transfer from Lake Brunner Eco Lodge to Theatre Royal Hotel



12:00pm | Site Inspection
Guide



12:30pm | Theatre Royal Hotel
Meal



1:30pm | Transfer from Theatre Royal Hotel to Hokitika Fire Station Apartments



1:55pm | Site Inspection
Guide



1:55pm | Accommodation (1 night)



2:35pm | Transfer from Hokitika Fire Station Apartments to Hokitika Gorge Walk



3:05pm | Hokitika Gorge



4:20pm | Transfer from Hokitika Gorge Walk to Rimu Lodge



4:50pm | Site Inspection
Guide



5:30pm | Transfer to from Rimu Lodge to Woodstock Hotel



5:35pm | Dine at Woodstock Hotel
Meal



Group to split



8:00pm | Transfer to Accommodations



8:00pm | Accommodation (1 night)

DAY 3

Wed, 3 Jul 2024



7:45am | Transfer from Hokitika Fire Station Apartments to Beachfront Hotel Hokitika



Breakfast at Beachfront Hotel Hokitika



9:30am | Transfer from Beachfront Hotel Hokitika to WC Treetop Walk & Zipline



9:45am | Treetop Walkway Adventure
Activity



10:45am | Transfer from WC Treetop Walk & Zipline to Ross Beach Top 10 Holiday Park



11:00am | Site Inspection
Guide



11:30am | Transfer from Ross Beach Top 10 to SnakeBite Brewery



1:00pm | Dine at Snakebite
Meal



1:50pm | Transfer from SnakeBite Brewery to Lake Mapourika



2:00pm | Scenic Cruise and Nature Walk
Activity



3:50pm | Transfer from Lake Mapourika to Waiho Hot Tubs



4:00pm | Waiho Hot Tubs Soaking
Activity



5:00pm | Transfer from Waiho Hot Tubs to Distinction Te Weheka Fox Glacier Hotel



5:30pm | Accommodation (1 night)



Check in at hotel and time to fresh up / free time before dinner



6:30pm | Walk from Distinction Fox Glacier to Betsey Jane Restaurant



6:40pm | Dine at Betsey Jane Eatery & Bar
Meal

DAY 4

Thu, 4 Jul 2024



Breakfast at your leisure at the hotel



7:20am | Transfer from Distinction Fox Glacier to Waiatoto River Safari



9:45am | Waiatoto River Safari
Activity



11:15am | Transfer from Waiatoto River Safari to Lake Moeraki Wilderness Lodge



12:00pm | Site Inspection
Activity



1:30pm | Transfer from Lake Moeraki Wilderness Lodge to INFLITE Franz & Fox Helicopters



3:00pm | Tasman Glacier - Picnic Amongst the Peaks
Activity



4:00pm | Walk from INFLITE Franz & Fox Helicopters to Rainforest Retreat



4:05pm | Rainforest Retreat - Site Inspection
Guide



4:30pm | Walk from Rainforest Retreat to Te Waonui Forest Retreat



Check in at hotel and time to fresh up / free time



4:35pm | Accommodation (1 night)



5:30pm | Gin Class
Activity



6:30pm | Dinner at The Canopy Restaurant - 4 course menu
Meal

DAY 5

Fri, 5 Jul 2024



Breakfast at your leisure at the hotel



7:30am | Walk from Te Waonui Forest Retreat to Franz Josef Glacier Guides



7:45am | Glacier Heli Hike
Activity



10:45am | Transfer from Franz Josef Glacier Guides to Westwood Lodge



10:50am | Site Inspection
Guide



11:15am | Transfer from Westwood Lodge to Greymouth Railway Station



1:30pm | TranzAlpine
Train



7:00pm | Transfer from Christchurch Railway Station to Fable Christchurch



7:00pm | Shuttle Transfer
Transfer



7:00pm | Accommodation (1 night)

DAY 6

Sat, 6 Jul 2024



END OF FAMIL
