



# West Coast Tourism Summit 2025

Scott Callaway

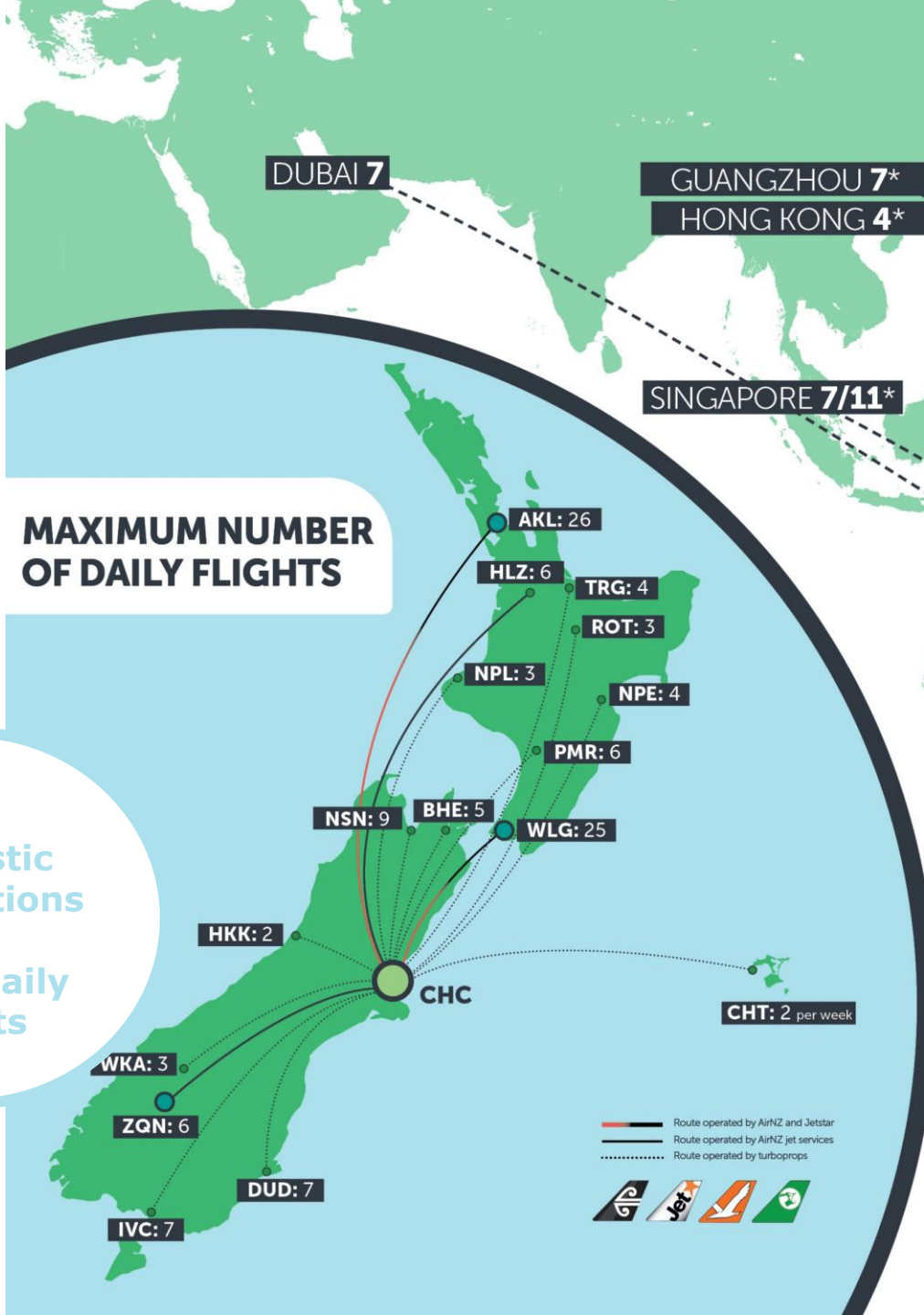
Connecting Te Waipounamu to the World



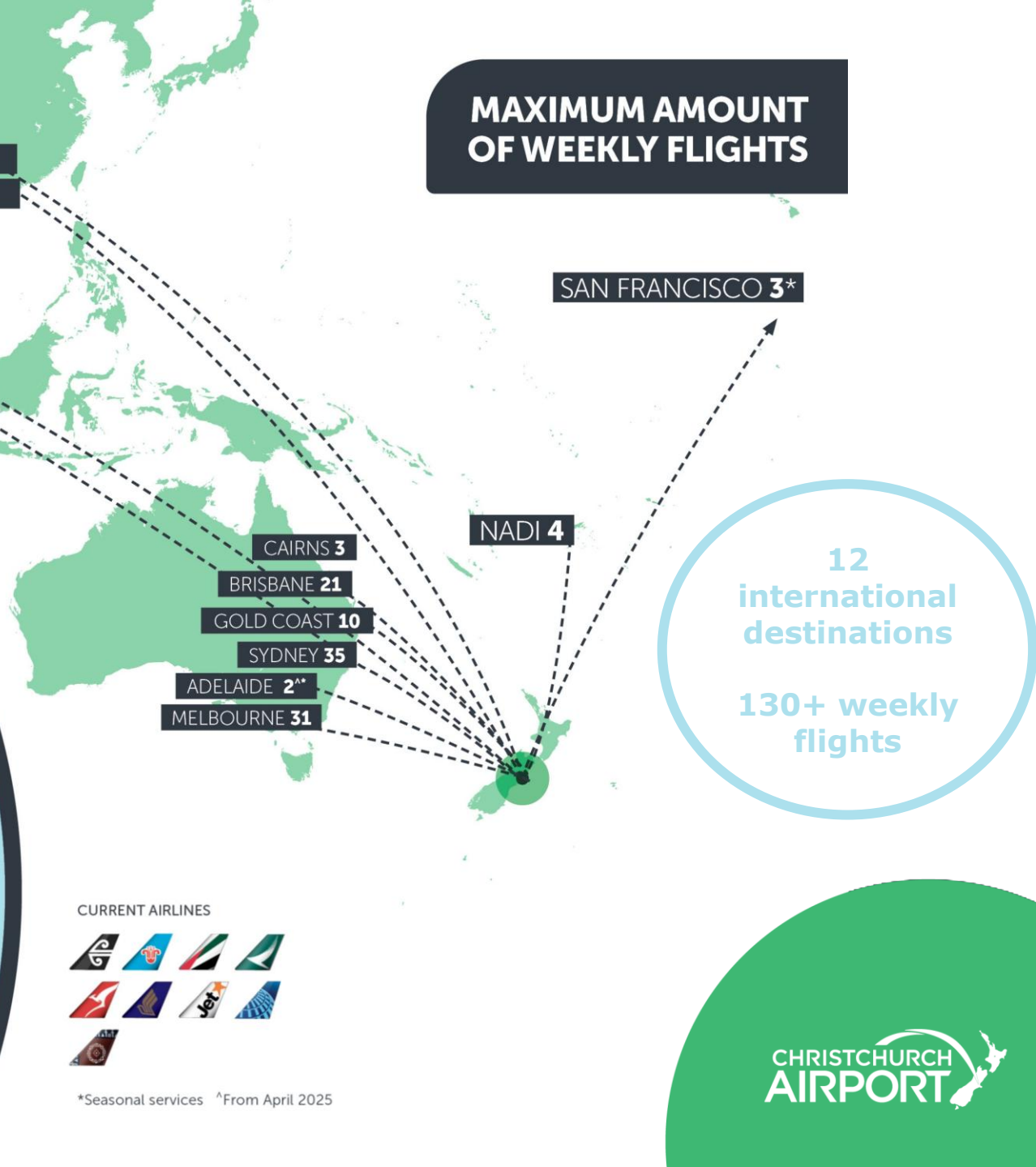
## MAXIMUM NUMBER OF DAILY FLIGHTS

16 domestic destinations

100+ daily flights



## MAXIMUM AMOUNT OF WEEKLY FLIGHTS



12 international destinations

130+ weekly flights

### CURRENT AIRLINES



\*Seasonal services \*\*From April 2025

CHRISTCHURCH AIRPORT



# *airlines* THAT FLY TO CHC



# JVs MAKE IT WORK



- JV's have gone beyond the simple reciprocal feed of respective networks, they are more sophisticated arrangements than simple SPA's.
- We use JV's to create a functional network that is non-hostile to new tails in the South Island market.

# benefits OF DUAL-GATEWAY



- All international carriers in Christchurch operate a dual gateway strategy to provide itinerary flexibility.
- This helps to reduce pro-rate costs as well as reducing the risk of 'empty-leg' services operated seasonally.
- Grow your total New Zealand presence and position flights with Star Alliance feeder flights.

# Capacity Growth for Summer (NW25)

Seat capacity



**International** capacity up **12%** on **NW24**  
(+108,222 seats)



**International** recovery at 98% of **NW18** levels  
(-16,201 seats)



**Domestic** capacity up **5%** on **NW24**  
(+130,229 seats)



**Domestic** recovery at 97% of **NW18** levels  
(-72,725 seats)



# Busy Summer Schedules by Airline

Seat capacity vs last NW



**+16%**

3x daily SYD & 2x daily BNE & MEL



**+35%**

Daily on OOL mid Dec to late Jan  
Daily on MEL for full season



**+6%**

Upgauging aircraft to A321neo  
Retiming BNE flights  
Suspending OOL  
Launching CHC-ADL



**+6%**

4x supplementary flights per week  
2340 arr (.23.5.7) / 0110 dep



**+9%**

Starting 1 month earlier from 03NOV  
3-4x per week



**+23%**

5-7x per week from 01NOV to 03MAR



**+1%**



**-2%**

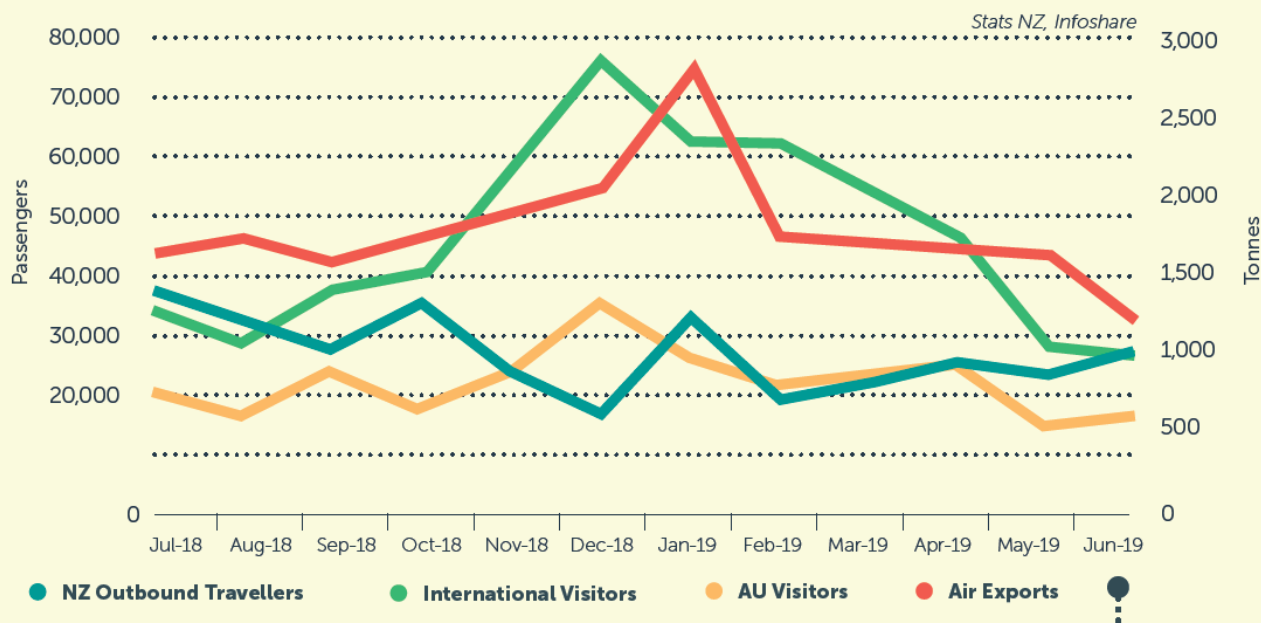


**+5%**

Date	Flight #	Origin	Dest	Dep	Arr	Op Days	Flight time	Aircraft	Seats
27OCT25-28NOV25^	NZ261*	CHC	ADL	1900	2105	1.....	4h 35m	A320neo	165
				1800	2005	.....5..			
25NOV25-28MAR26				1800	2005	1...5..	4h 35m	A320neo	165
27OCT25-28MAR26	NZ262*	ADL	CHC	0700	1345	.2...6.	4h 15m	A320/1neo	165/214

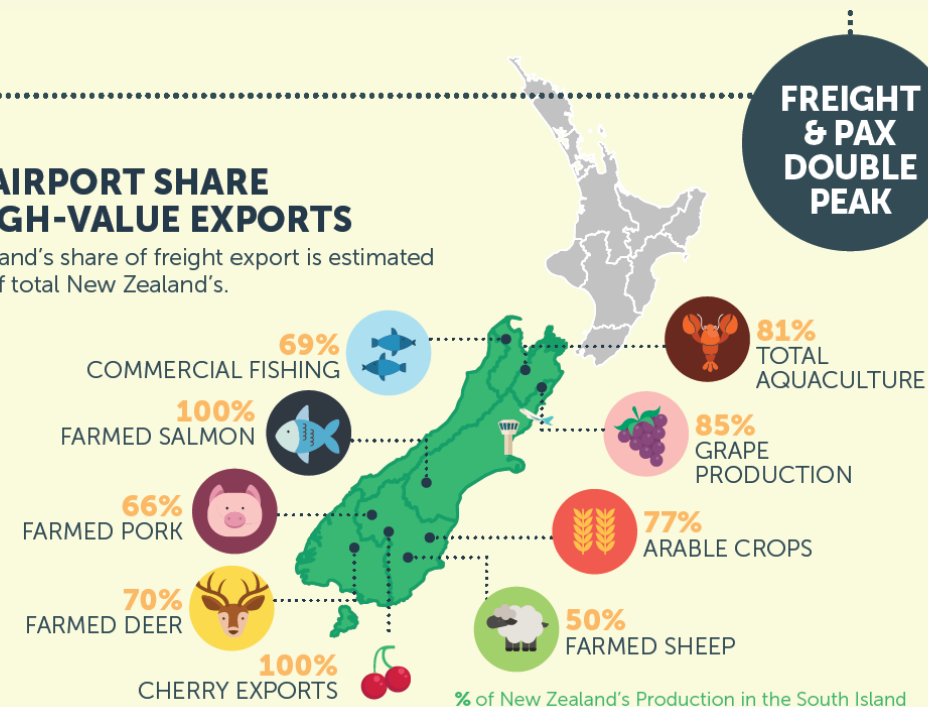
^NZ261 MON services will be operated 1900 – 2105 between 27OCT till 28NOV.  
\*Up gauging NZ261 3NOV & NZ262 4NOV to A321neo

# CHC AIRPORT MARKET *Seasonality*



## CHC AIRPORT SHARE OF HIGH-VALUE EXPORTS

South Island's share of freight export is estimated at 22% of total New Zealand's.





# CHRISTCHURCH *Visitors*

## PREFERENCE FOR THE SOUTH ISLAND

Visitors come to New Zealand to see the South Island

**51%**

Visitor nights are spent in the South Island

**22%**

But only 22% of visitors enter New Zealand through gateways in the South Island

YOUR  
**GATEWAY**  
— TO THE —  
*South Island*  
**OF NEW ZEALAND**

**77%**

Of New Zealand's Great Walks and National Parks are in the South Island

**73%**

Of Visitors come to New Zealand for Walking / Hiking and the Great Outdoors

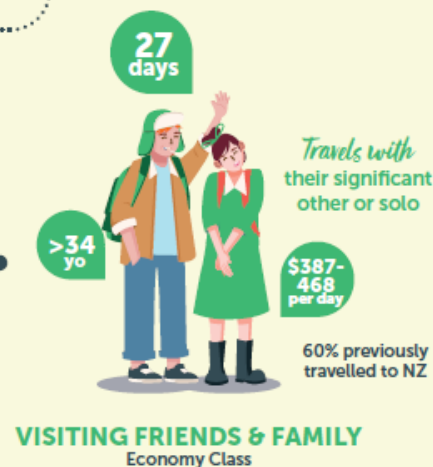
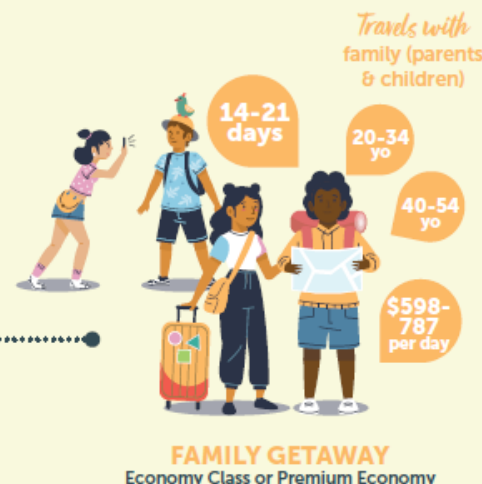
CHRISTCHURCH  
**AIRPORT**

WHAT PASSENGERS

# Our VISITOR DEMOGRAPHIC

Majority of visitors come for holidays

**75% holiday**  
LONGHAUL  
VISITORS



**22%**  
of longhaul  
visitors come to visit  
family, friends  
& relatives.



## FUTURE CHRISTCHURCH STRUCTURAL CHANGES *in the market*

- **Te Kaha – Canterbury’s Multi-Use Arena:** Opening in 2026, this state-of-the-art stadium (36,000 attendees) will host major concerts, international sporting events, and cultural celebrations, drawing visitors from across the globe.
- **Parakiore – Metro Sports Facility:** Slated to open in 2025, it will be the largest aquatic and indoor recreation facility in New Zealand, creating a world-class venue for competitions and conferences.
- **Vibrant Events Calendar:** A robust pipeline of international events, festivals, and conferences ensures that CHC remains a must-visit destination for travelers seeking dynamic experiences.

These developments enhance Christchurch’s appeal as a destination for leisure, business, and sports tourism, fueling demand for increased inbound air travel.

CHC is on the cusp of a new era of international appeal, driven by significant investments in infrastructure and events.



## Te Pae Christchurch: Transforming the Winter Market

Te Pae Convention Centre has transformed Christchurch's traditionally quieter winter season into a dynamic period of international activity.

Since its opening in December 2021, the venue has hosted 458 events, including 29 international conferences, drawing over 204,000 attendees and elevating the city's status as a premier global destination for business events.

These high-value events have significantly boosted inbound international travel during off-peak months, creating consistent demand for premium air travel.



## THE MARKET HAS CHANGED & CONTINUES TO *evolve rapidly*

2022

### Te Pae Opening

In 2022 Te Pae brought in 60,000 people to the city. In 2022, it brought in a further 100,000 delegates.

2023-  
2024

### Bumper cruise & events summer seasons

80 cruises (1,300 pax start in CHC) & over 20 conferences/big ticket events confirmed for the summer season.

2025

### Parakiore Recreation and Sport Centre opening

Set to bring the equivalent of x1 A320 into & out of the city each week.

2026

### Te Kaha opening

Multi-use arena with 36,000 capacity estimated to be completed by mid-2026

# Where the World Will Come to Play

Unmissable events will drive record visitor demand

## Summer Games

**10-15 DEC**

Special Olympics National Summer Games will be hosted at Hosted at our new Metro Sports facility - **Parakiore**

## Electric Avenue

**27-28 FEB**

Electric Avenues two-day event will bring over 23,000 dom and 650 int visitors

## Te Kaha Opens

**01 APR 2026**

36,000 capacity multi-use arena 'One New Zealand' **Te Kaha Stadium** is expected to open

## Super Cars

**17-19 APR**

Confirmed for 3 years, this event will bring 16,100 dom and 3,900 int visitors

## Super Rugby

**24-26 APR**

First Super Round to be held in NZL – expecting 9,750 dom and 3,900 int visitors



# *Welcome* **HAERE MAI**

---

**CHAMPIONING TE WAIPOUNAMU  
THE SOUTH ISLAND FOR TODAY  
AND TOMORROW**

---

